

# An Introduction To Philmont

November Advisor Briefing

# Where is Philmont?



Philmont is in north central New Mexico, approximately 280 miles south of Denver, Colorado.



Philmont

Base Camp

# What Is Philmont?

- Philmont is over 200 square miles (137,493 acres) of rugged mountain wilderness in the Sangre de Cristo range of the Rocky Mountains.
- Philmont is located near Cimarron, New Mexico in Colfax County.
- It is owned and operated by the Boy Scouts of America.
- The land at Philmont has mountains and valleys that range from approximately 6,000 to 12,400 feet at Baldy Mountain (highest point on the ranch).

# Features of the Ranch

- Philmont continues to be a working ranch (horses, cattle and buffalo).
- Two of the highest mountains in the state of New Mexico are on the property.
- Streams
- Forests
- High Desert
- Mines

# History of Philmont

- The area that is now Philmont was originally populated by the Jicarilla Apache, Ute and Comanche.
- In 1841 Charles Beaubien and Guadalupe Miranda were granted more than one million acres by the government of Mexico.
- US Army scout Lucien Maxell married Luz Beaubien, daughter of Charles Beaubien, either inherited or purchased the entire Beaubien-Miranda land grant, and led the first settlers to the area.

# History of Philmont

- In 1870, Maxwell sold his land to an English company known as the Maxwell Land Grant and Railroad Company.
- Later the land was purchased by Dutch interests.
- Disputes between the foreign owners and squatters led to fighting the 1876 Colfax County War over the land

# History of Philmont

- Over time, the original land grant was broken up and sold in tracts for ranches and commercial development.
- The area was rich in natural resources and supported the timber industry, railroads, and mining for gold, silver and coal in the 1800s and early 1900s.





# History of Philmont

- In the early 1920s, oil man Waite Phillips purchased 350,000 acres of the land grant.
- Phillips closed the land to commercial development other than ranching.
- The ranch was the Phillips' summer home, where they entertained family and guests.

- 1938 - Waite Phillips donated 35,857 acres of land from his ranch to the Boy Scouts.
- The camp was originally called Philturn Rocky Mountain Scout Camp.





# History of Philmont

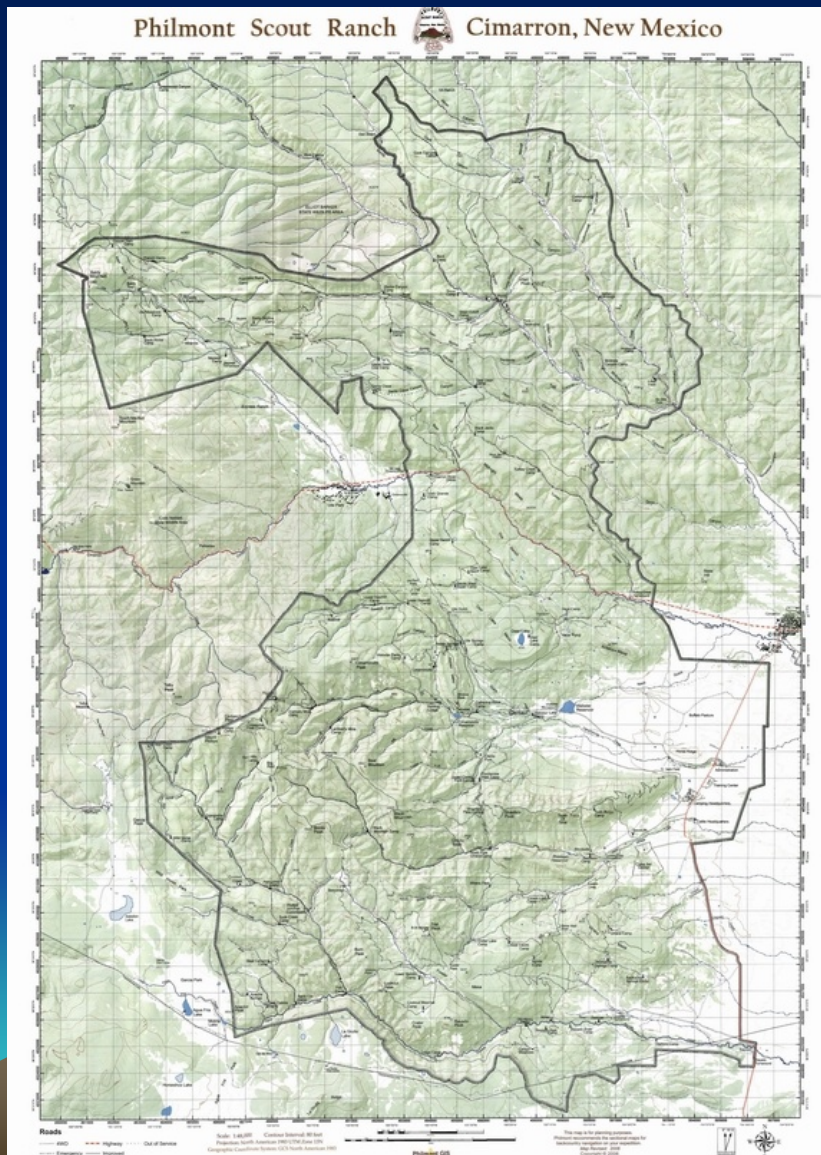
- In the years that followed, Waite Phillips was very impressed with the stewardship of the Boy Scouts.
- In 1941, he donated an additional 91,000 acres of land to the Boy Scouts.
- To support the new camp, he also donated the Philtower building in Tulsa, Oklahoma so that rents could be used to pay for upkeep of the camp.

# History of Philmont



Philtun Rocky Mountain Scout Camp was renamed Philmont Scout Ranch and now totaled 127,395 acres.

# History of Philmont



In 1963, Norton Clapp, Vice President of the National Council of the Boy Scouts donated 10,098 acres around the Baldy Mountain area bringing the current size of the ranch to about 214 square miles.

# History of Philmont

- Philmont has worked with owners of lands adjoining the ranch to expand operations beyond the Boy Scout owned property, including
  - The Valle Vidal (Valley of Life) in the Carson National Forest
  - Ted Turner's Vermejo Park Ranch



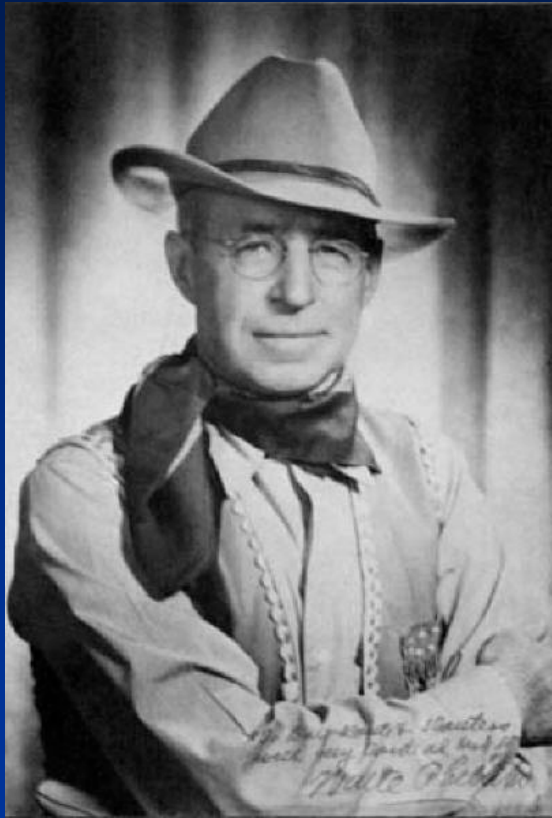
# Philmont Today

- The most popular program offered is the 12-day backpacking treks during the summer.
- Other programs include:
  - Cavalcades (horseback treks)
  - Autumn Adventure (fall treks)
  - Kanic (winter camping)
  - Philmont Training Center courses



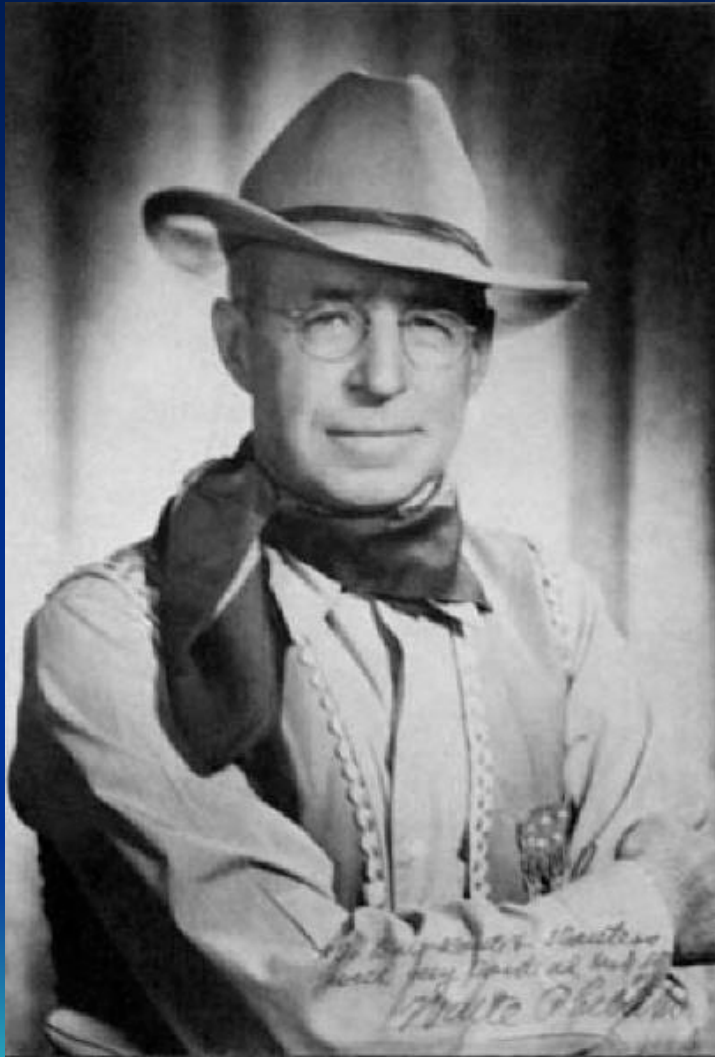
# Philmont Summer Treks

- Crews choose from 35 pre-planned itineraries.
- Each day about 30 crews arrive at Philmont, and about 30 crews depart for home.
- On any given day approximately 3,500 campers plus staff are in the backcountry.



"The only things we keep  
are those we give away"

-Waite Phillips



"The only things we  
keep are those we  
give away"

- Waite Phillips

# Questions?