

**TRACING THE TRACKS AND TRAILS
OF NORTHEAST NEW MEXICO**

A long, lush memory is embedded in the land where the Great Plains meet the Rocky Mountains. The earth has kept a record of tracks and trails to present the ultimate American Western. First came the dinosaurs, leaving tracks embedded in sandstone. Then Folsom Man left his mark for a curious cowboy to find centuries later.

Northeast New Mexico is a history lesson of what happens when two empires meet. The older north-south Spanish Empire reached Santa Fe, and the younger, brasher east-west American Empire extended west into Missouri. A grand 600-mile prairie lay in between. Wagon after wagon followed the Santa Fe Trail, leaving legacies of tracks that can still be seen today. When the railroads came, they left tracks of another kind. Route 66 left traces of yet another era.

Listen carefully and you can hear the eagles and hawks screech as they fly. The winds bring the whisper of Folsom Man's spears flying through the air, the clip-clop of horses carrying Spanish *conquistadores*, the woody creaks of wagons following the Santa Fe Trail. Listen for the mournful wails of distant railroad whistles and the thrum of '56 Chevys on Route 66. Now get out of your car and stay awhile. Be a part of history being made today.

Crockett Block (Murphey's Drug Store), Las Vegas



**NORTHEAST NEW MEXICO
COUNTY RESOURCES**

Ready to round up your visit to Northeast New Mexico?
Here's where to find more information:

www.NEnewmexico.com

Angel Fire Chamber of Commerce
Centro Plaza, Hwy 434
P.O. Box 547
Angel Fire, NM 87710
505-377-6661
505-377-3034 fax
800-446-8117
askus@angelfirechamber.org
www.angelfirechamber.org

Cimarron Chamber of Commerce
104 North Lincoln Avenue
P.O. Box 604
Cimarron, NM 87714
505-376-2417
888-376-2417
chamber@springercoop.com
www.cimarronnm.com

**Clayton Tourist Center
Clayton/Union County
Chamber of Commerce**
1107 South First
P.O. Box 476
Clayton, NM 88415
505-374-9253
800-390-7858
cuchamber@plauteautel.net
www.claytonnewmexico.org

**Eagle Nest
Chamber of Commerce**
54 West Therma Drive
P.O. Box 322
Eagle Nest, NM 87718
505-377-2420 ph/fax
800-494-9117
chamber@eaglenest.org
www.eaglenest.org

**Las Vegas/San Miguel County
Chamber of Commerce**
701 Grand Avenue
P.O. Box 128
Las Vegas, NM 87701
505-425-8631
505-425-3057 fax
800-832-5947
lvsmcc@zianlink.com
www.lasvegasnm.org

Mora Valley Chamber of Commerce
Route 518
P.O. Box 800
Mora, NM 87732
505-387-6072
505-387-6008 fax (call first)

**Raton Chamber & Economic
Development Council
Tourist Information Center**
100 Clayton Road
P.O. Box 1211
Raton, NM 87740
505-445-3689
505-445-3680 fax
800-638-6161
ratonchamber@bacavalley.com
www.raton.info

**Santa Rosa Visitors
Information Center**
486 Historic Route 66
Santa Rosa, NM 88435
505-472-3763
505-472-3848 fax
www.santarosanm.org

Springer Chamber of Commerce
606 Maxwell Avenue
P.O. Box 323
Springer, NM 87747
505-483-2998
505-483-2473 fax
springercocf@railnet.isp.com

**Tucumcari/Quay County
Chamber of Commerce**
404 West Route 66
P.O. Drawer E
Tucumcari, NM 88401
505-461-1694
505-461-3884 fax
chamber@tucumcarinm.com
www.tucumcarinm.com



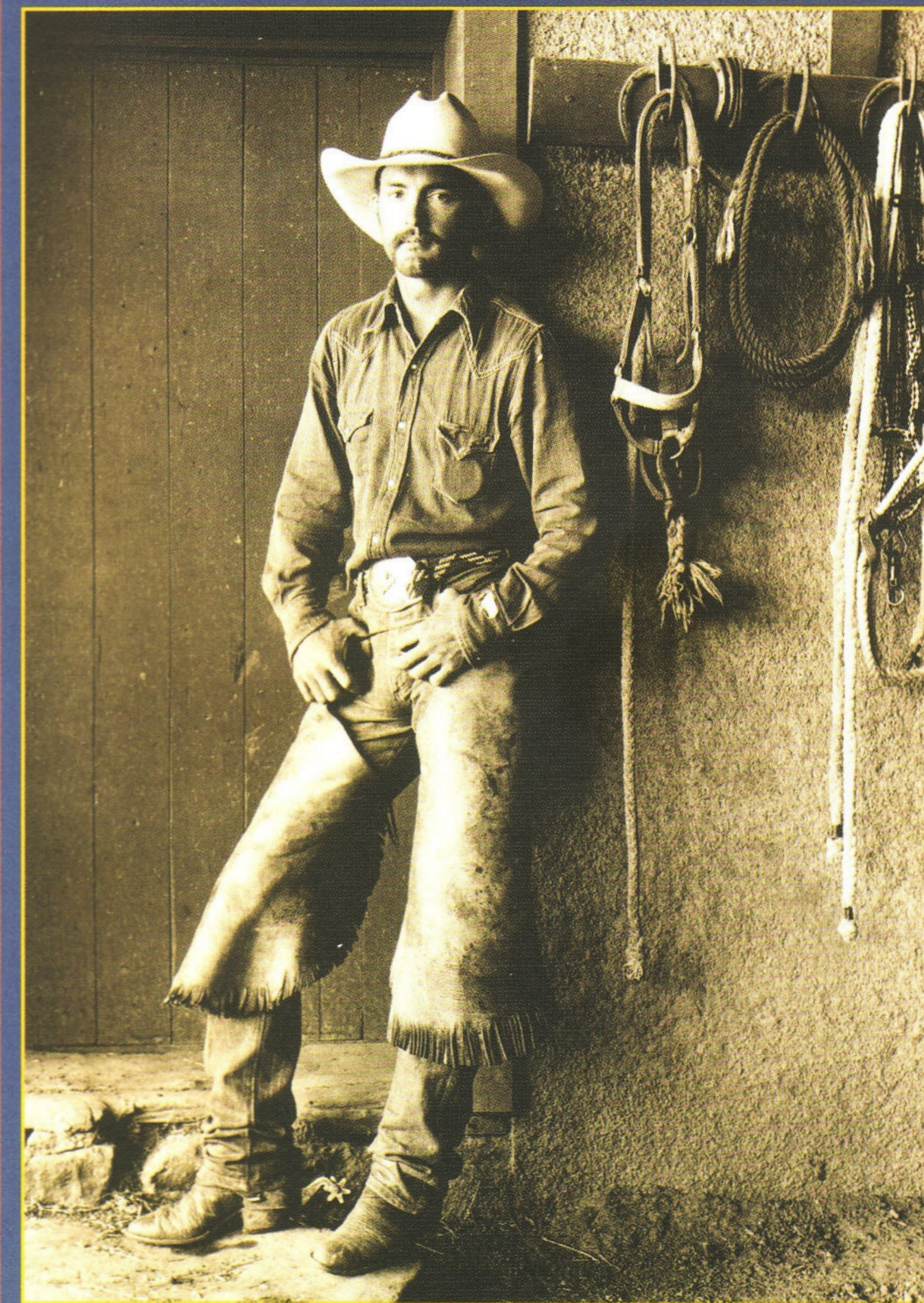
Welcome Centers in Northeast New Mexico

Raton Visitor Information Center
100 Clayton Road
Raton, NM 87740
505-445-2761
ratonvic@directway.com

Glenrio Visitor Information Center
37315 C, I-40
Glenrio, NM 88434
505-576-2424

COVER PHOTO BY DOUGLAS KENT HALL. BELL RANCH COWBOY, 1984
FROM THE BOOK "WORKING COWBOYS," HOLT, RINEHART & WINSTON PUBLISHERS.
BROCHURE PRODUCED BY WEBB DESIGN, TAOS, NEW MEXICO

**NORTHEAST
New Mexico**
FREE TOURING GUIDE & MAP



**Where The Great Plains
Meet The Rocky Mountains**

www.NEnewmexico.com

Storrie Lake State Park



Conchas Lake State Park Golf Course



Cleveland Roller Mill, Mora County



Horses & Butte, Bueyeros/ Bob Wallace



Fort Union National Monument

Scuba Diving / Virgil Poleschook



Villa Philmont, Philmont Scout Ranch



Angel Fire Resort



Tucumcari Neon / Jonnie V.

NORTHEAST New Mexico

PLACES TO GO, THINGS TO SEE AND DO

Here is a partial list of the treasures that await you in Northeast New Mexico. Visit NNewmexico.com to learn more.

PARKS & REFUGES

For fishing, hiking and water sports

- Blue Hole, Santa Rosa
- Canadian River
- Capulin Volcano National Monument
- Carson National Forest
- Cimarron Canyon State Park
- Clayton Lake State Park
- Conchas Lake State Park
- Cowles Pond
- Coyote Creek State Park
- Eagle Nest Lake State Park
- Folsom Falls
- Gallinas River Recreation Area
- Hermits Peak
- Kiowa and Rita Blanca National Grasslands
- Las Vegas National Wildlife Refuge
- Maxwell National Wildlife Refuge
- Monastery Lake
- Mora National Fish Hatchery
- Morphy Lake State Park
- Park Lake Ponds, Santa Rosa
- Pecos River
- Pecos Wilderness

- Santa Fe National Forest
- Santa Rosa Lake State Park
- Storrie Lake State Park
- Sugarite Canyon State Park
- Ute Lake State Park
- Vietnam Veterans Memorial State Park, Angel Fire
- Villanueva State Park
- Walleye Lakes

WINTER SPORTS

- Angel Fire Ski Area
- Sipapu Ski & Summer Resort

GOLF

- Angel Fire Country Club
- Clayton Golf Course
- Conchas Dam Park Golf Course
- NM Highlands University Golf Course
- Pendaries Village Golf & Country Club
- Raton Country Club Golf Course
- Santa Rosa's Tres Lagunas Golf Course
- Tucumcari Municipal Golf Course

MUSEUMS

- Aztec Mill Museum, Cimmaron
- Cleveland Roller Mill Historical Museum
- Ernest Thompson Seton Memorial Museum & Library, Philmont Ranch

- Herzstein Memorial Museum, Clayton
- Kit Carson Museum, Rayado
- Las Vegas & Rough Riders Memorial Museum
- Mesalands Dinosaur Museum, Tucumcari
- Raton Museum
- Route 66 Auto Museum, Santa Rosa
- Santa Fe Trail Museum, Springer
- Tucumcari Historical Museum

HISTORIC LANDMARKS

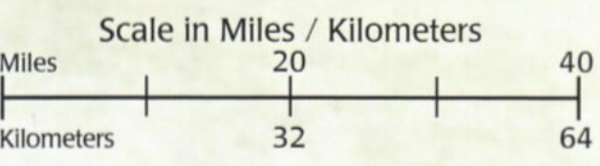
- Eklund Hotel, Clayton
- Elizabethtown
- Fort Union National Monument
- La Capilla de Santa Rosa de Lima, Santa Rosa
- Montezuma Castle, Las Vegas
- Mosquero Canyon's Dinosaur Freeway
- Nuestra Senora de Refugio Church, Puerto de Luna
- Pecos National Historical Park
- Rincon Colorado Mission of Gallegos
- Route 66 Vintage Motels & Cafes
- Shuler Theater, Raton
- St. James Hotel, Cimarron



Map by Barrell Breeman © Webb Design Inc. Bas. This map may not be reproduced in any manner without written consent from Webb Design. 505-758-3447 9/07

AREA LEGEND

- Civil War Historical Site
- Historical Trail
- Points of Interest
- Town
- Ghost Town
- County Seat
- National Forest
- Pueblo Reservation
- Historic Road
- Interstate Highway
- Secondary Road
- Primary Road
- Unpaved Road
- Alternate Historic Road
- Railroads
- County Boundary



AMERICA'S ROADWAY:
Guadalupe, Quay & San Miguel Counties

Affectionately known as "The Mother Road," Route 66 has a mystic quality to it. Many curiosities that made Route 66 intriguing to travelers have fallen victim to interstate highways, but much of the route's character can still be seen. **Tucumcari's** five-mile claim to '66 fame is along Historic Route 66, where the Mother Road treasure trove of motels, restaurants and curio shops still exists, including the legendary **Blue Swallow Motel**. In **Santa Rosa**, Route 66 is the city's four-mile soliloquy to '66.

SANTA FE TRAIL SCENIC BYWAY
Colfax, Union, Mora & San Miguel Counties

During its colorful history, the **Santa Fe Trail** was used by traders, merchants, mountain men, gold seekers, military expeditions, immigrants, journalists and a few early-day tourists. Follow the trail and honor the thousands of men and women who bravely pioneered across the unknown plains. The remnants await the traveler at scores of sites across much of Northeast New Mexico, managed by private landowners, non-profit groups and federal, state and local agencies. Look for the distinctive signs that mark the auto tour that parallels the Santa Fe Trail.

ENCHANTED CIRCLE SCENIC BYWAY
Colfax & Taos Counties

This 84-mile tour circles **Wheeler Peak**, the highest point in New Mexico at 13,161 feet / 4,011 meters. In **Questa**, visit **Artisanos de Questa**. Stroll around the old west town of **Red River**. Take **Bobcat Pass** to **Eagle Nest Lake** then visit the **Vietnam Veterans Memorial** before taking a break in **Angel Fire**, a four-season resort with skiing and golfing. Historic **Taos** is an art colony, an Indian Pueblo and a world renowned ski resort.

DRY CIMARRON SCENIC BYWAY
Colfax & Union Counties

Journey 215 miles through grasslands, across prairies, canyons and dry riverbeds and past sandstone formations with names like "**Battleship**" and "**Wedding Cake**." This is an excellent trip to take with children, with many ingredients to make

the trip educational, fun, and moderately priced. Walk in actual **Santa Fe Trail** wagon ruts, wander through an old mining camp and see eight kinds of dinosaur tracks. Stand in the crater of **Capulin Volcano** against the breathtaking backdrop of other dormant volcanos in the surrounding mountain ranges, mesas and valleys.

MESALANDS SCENIC BYWAY
Guadalupe, Quay & San Miguel Counties

Choose between four loop tours through a colorful tableland with multicolored bands of geological history, sandstone rocks balancing in pinnacle formations and the cool winding water of the **Canadian River**. The great plateau of **El Llano Estacado** or "staked plain" covers about 32,000 square miles and extends into West Texas. Dinosaur once roamed this region 100 million years ago. Many species of wildlife are found in the Mesaland, including Pronghorn Antelope, Mule Deer, several species of quail, dove, turkey, Canadian Geese, Snow Geese, ducks, coyote, badger, rabbit and porcupine.

LA FRONTERA DEL LLANO SCENIC BYWAY
Harding County

The fragile legacy of our American West is alive in sparsely populated Harding County. Experience vast lands where deer and antelope roam. In this harshly beautiful country cattle outnumber residents 60 to one. Near the **Canadian River Canyon** live the friendly folks of **Mills, Roy, and Mosquero**. Beyond await the picturesque villages of **Bueyeros** and **Gallegos**.

