

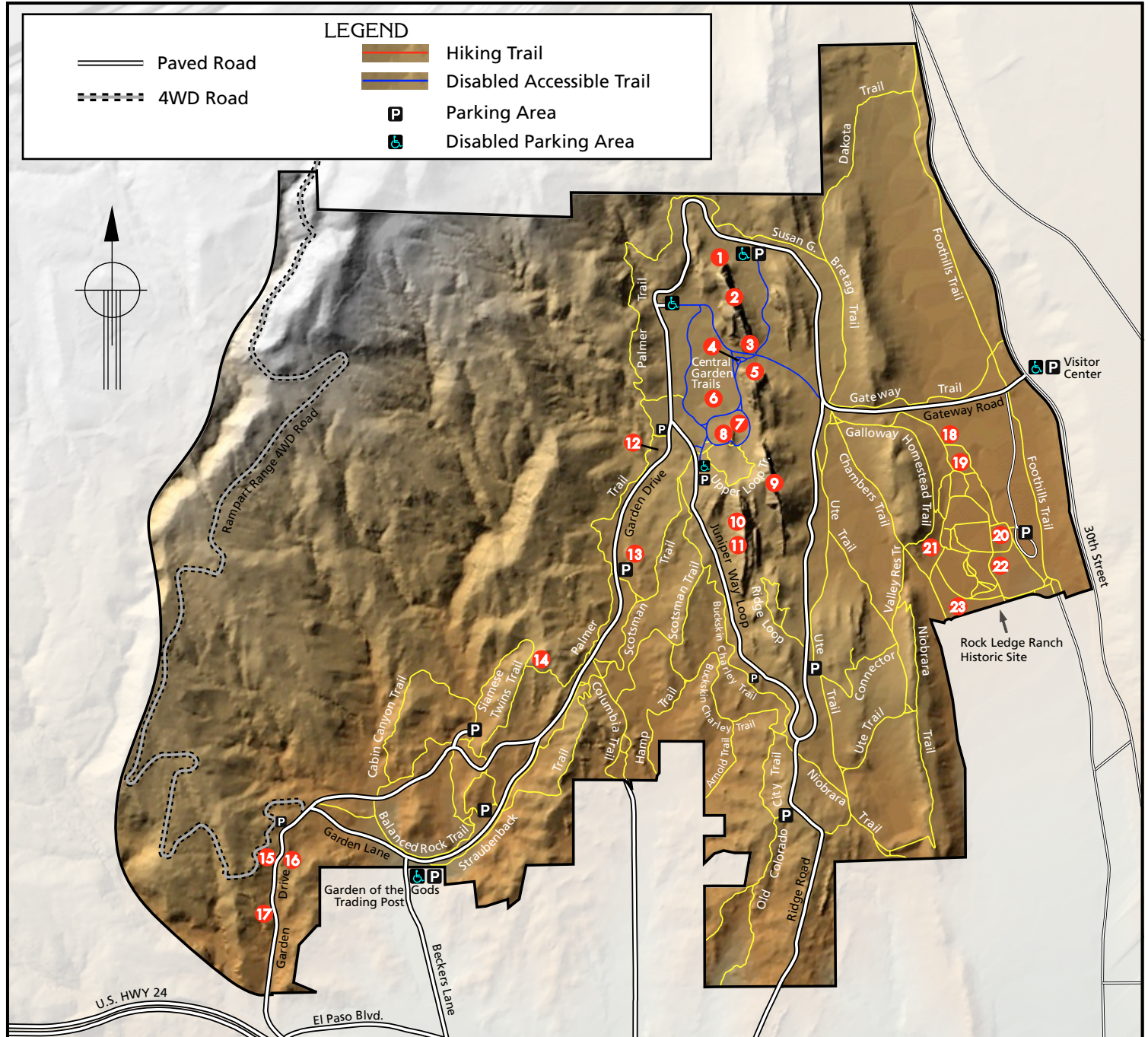
## FEATURES

- 1 Tower of Babel
- 2 North Gateway Rock / Kissing Camels
- 3 Signature Rock
- 4 Sentinel Rock
- 5 South Gateway Rock
- 6 Pulpit Rock
- 7 Cathedral Spires
- 8 Three Graces
- 9 Kindergarten Rock
- 10 Keyhole Window
- 11 Sleeping Giant
- 12 Giant Footprints
- 13 Scotsman
- 14 Siamese Twins
- 15 Balanced Rock
- 16 Steamboat Rock

# Garden of the Gods

## Hiking

- 17 Toad and Toadstools
- 18 Native American Area
- 19 Galloway Homestead
- 20 Carriage House
- 21 Rockledge House
- 22 Orchard House
- 23 Blacksmith Shop







### 1 - TOWER OF BABEL

Red Lyons sandstone tower of the north-facing end of North Gateway Rock. Dominating the landscape from the uppermost section of the Palmer trail. The contact between the Lyons formation and Fountain formation is clearly visible on the west side of the tower. Photograph taken during summer with late afternoon light.



### 7 - CATHEDRAL SPIRES

A group of Fountain formation fins standing nearly vertical, situated southwest of South Gateway rock. Can be seen up close from the Central Garden trails. Another striking perspective of the Cathedral Spires is through a low spot between South Gateway and Cathedral rocks, from the Galloway Homestead, Chambers and Ute trails. Photograph is taken from the south of the Spires around mid-day.



### 2 - NORTH GATEWAY ROCK

Massive red Lyons sandstone wall with the Kissing Camels feature prominently displayed on top of the formation. Faulting and uplift from nearby Pikes Peak massif has caused the formations in the Garden of the Gods to be tilted up into a near vertical position. Best views are from the Central Garden and Gateway trails. Photograph is of the east face with Pikes Peak in the background with morning light.



### 8 - THREE GRACES

A small plaza is located to the south and at the foot of the Three Graces. The plaza hosts a variety of ceremonial events. A set of three narrow Fountain formation fins, the easternmost being the tallest. Best views are from the Central Garden and Upper Loop trails. Photograph taken from the Upper Loop trail looking north with mid-morning light during summer.



### 3 - SIGNATURE ROCK

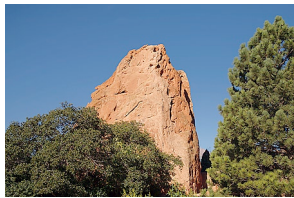
Inscriptions from early explorers and visitors have been left on this smaller rock at the southeastern end of North Gateway Rock. Some signatures have dates, others are just a record of passing. Please do not touch, the fragile sandstone is subject to erosion and further weathering.

Located at the intersection of Gateway and the Central Garden trails.



### 9 - KINDERGARTEN ROCK

Comprised of the younger Lyons sandstone, a massive wall of grey sandstone rock. It is one of the longest continuous expanses of exposed rock in Garden of the Gods Park. Best views are from Susan G. Bretag, Ute, Chambers, Valley Reservoir, Ridge Loop and Upper Loop trails. Photograph taken from Susan G. Bretag trail with early morning light.



### 4 - SENTINEL ROCK

Composed of two rock formations; red Lyons on the east face and the lighter color Fountain on the west face. Also referred to as Red and White Twin Spires within the climbing community. It is a smaller feature that stands between the the Gateway rocks. Can be viewed from the Central Garden and Gateway trails. Photograph taken of the northeast face with morning light.



### 10 - SLEEPING GIANT

This feature is expressed in the red Lyons sandstone rising up out of a dense Juniper forest towards the southern end of the Central Garden area. Best veivs are from the Upper Loop, Scotsman and Buckskin Charley trails. The outline of the figure is more apparent around mid-afternoon during summer months. Photograph was taken from the Scotsman trail with late afternoon light.



### 5 - SOUTH GATEWAY ROCK

A monolith of red Lyons sandstone having the same characteristics as the North Gateway. The Lyons sandstone formations of the Garden of the Gods were deposited

between 245 and 286 million years ago. Good views are from the Central Garden, Gateway, Susan G. Bretag, Galloway Homestead, Chambers, and Palmer trails. Photograph is of the east face with early morning light.



### 11 - KEYHOLE WINDOW

A small window on top of a red Lyons sandstone wall located just south of the Upper Loop trail. The window is only visible from the west side of the formation. Best views are from the upper Scotsman trail. Photograph was captured from the upper Scotsman trail with evening light.



### 6 - PULPIT ROCK

Standing alone, a smaller feature rising out of a juniper forested section of the Central Garden area. It is composed of the reddish-brown conglomerate rock of the Fountain formation. Best view of this feature is seen from the Central Garden trails. Photograph is of the eastern face.



### 12 - GIANT FOOTPRINTS

Although the outline of footprint like shapes in the rock are more prevelant from a veiw farther to the north, this perspective of the Foutain formation just west of the intersection of Juniper Way and Garden Drive is much more dramatic. Best views are from the Palmer trail. Photograph is from the east side of the feature with morning light.





**13 - SCOTSMAN**

This outcrop of the Fountain formation is situated just behind and a short distance to the east of the Scotsman picnic area. The figure is partially hidden by

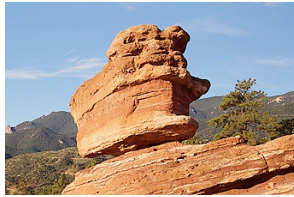
overgrowth of foliage in the foreground. Best views are from the Scotsman trail and from around the picnic area. Photograph was taken with late afternoon light during summer.



**14 - SIAMESE TWINS**

A set of two adjoining towers of stone with a window towards the bottom of the formation, not included in this photograph. Dark reddish conglomerate rock which

photographs well in morning light with views of Pikes Peak in the background. Best views are from the Siamese Twins trail.



**15 - BALANCED ROCK**

Due to erosion more prevalent at the base of this feature it appears to be perched in such a manner that soon it will tumble over on its side. Positioned along Garden Drive

at the west end of the park it greets visitors entering from the Manitou Springs side. Best views are from the parking areas near the formation. Photograph is of the eastern face with morning light.



**16 - STEAMBOAT ROCK**

Just south of the Balanced rock this slanting wall of red stone appears on the hilltop in a bold outcrop of the Fountain formation. At sunrise, a striking photograph

can be captured with the Rampart Range mountains in the background.



**17 - TOAD AND TOADSTOOLS**

A little difficult to find, these interesting set of rock features are located off the north side of Garden Drive towards the western border of the park. An area clear of

foliage just to the east of the rocks allows for morning to mid-afternoon photography.



**18 - NATIVE AMERICAN AREA**

Located within the Rock Ledge Ranch Historic Site section of Garden of the Gods Park, this feature portrays the lifestyle of the Ute people from 1775 - 1835 who

lived along the Central Front Range of the Rocky Mountains. The interpretive areas of the Historic Site are staffed Wednesday thru Sunday during summer months. Call (719) 578-6777 for current scheduling and events information.



**19 - GALLOWAY HOMESTEAD**

Situated near the Native American Area of the Rock Ledge Ranch Historic Site, this feature portrays 1860's pioneer lifestyle of the American west. The interpretive

areas of the Historic Site are staffed Wednesday thru Sunday during summer months. Call (719) 578-6777 for current scheduling and events information.



**20 - CARRIAGE HOUSE**

Another interpretive feature within the Rock Ledge Ranch Historic Site, various thematic exhibits are housed at this historic venue. The Carriage House is open Wednesday

thru Sunday during summer months. Call (719) 578-6777 for current scheduling and events information.



**21 - ROCKLEDGE HOUSE**

A historic site dating back to the 1880's, the Rockledge House provided living quarters for the Chambers Farm. Open Wednesday thru Sunday during summer

months. Call (719) 578-6777 for current scheduling information.



**22 - ORCHARD HOUSE**

Designed by architect Thomas MacLaren, known for designing the original Broadmoor Hotel. Orchard House was built in 1907 with such features as electricity, hot water

and central heating for the sister-in-law of William Jackson Palmer. Palmer was a founding member of Colorado Springs. Open for visitors Wednesday thru Sunday during summer months. Call (719) 578-6777 for current scheduling info.



**23 - BLACKSMITH SHOP**

Hand-pounded forged tools and fixtures from the 1900's era are produced here. Demonstrations for visitors running Wednesday thru Sunday during summer months.

Call (719) 578-6777 for current scheduling and events information.

**ROCK LEDGE RANCH HISTORIC SITE FEATURES**