

# CIMARRON

## ELEVATION

6,430 ft.

## POPULATION

850

## TEMPERATURE

Summer 83°F/55°F

Winter 47°F/18°F

## MILEAGE FROM CIMARRON

Taos	57
Santa Fe	126
Albuquerque	215
Amarillo	241
Denver	260
Oklahoma City	500

## MILEAGE TO SKI AREAS

Enchanted Forest	38
Angel Fire	38
Red River	42
Taos Ski Valley	75

## FOR MORE INFORMATION CONTACT:

**Cimarron Visitor Center and  
Chamber of Commerce  
P.O. Box 604**

**104 N. Lincoln Ave.**

**Cimarron, NM 87714**

**505-376-2417**

**Toll Free: 1-888-376-2417**

**Email: [chamber@springercoop.com](mailto:chamber@springercoop.com)**

**Website: [www.cimarronnm.com](http://www.cimarronnm.com)**

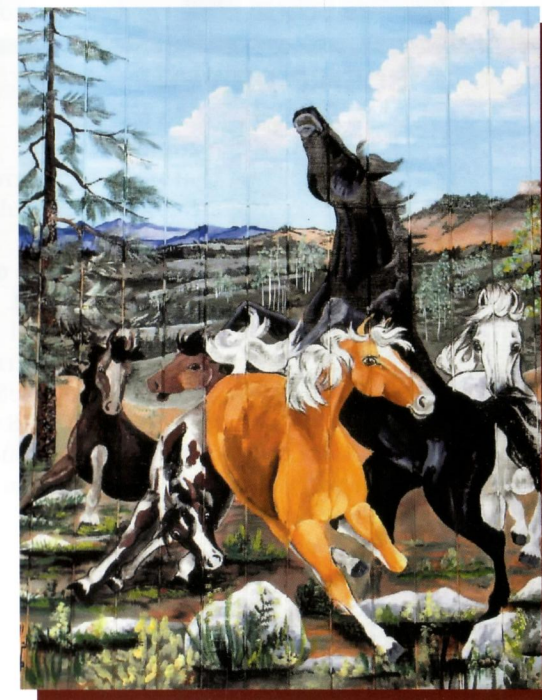


Cimarron, 1877

Courtesy of Ed and Sandy Sitzberger

# CIMARRON

## New Mexico



Mural by local artist Melinda Marlowe

*Where the  
Rockies Meet  
the Plains*



# Heart of the



# Historic West

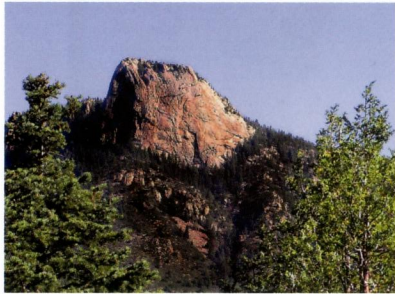
For over 10,000 years, the Cimarron area has provided shelter to man and beast alike. As habitat to Folsom Man, then Anasazi (Ancient Puebloan) Indians and later Utes and Jicarilla Apaches, the fertile slopes of the Sangre de Cristo Mountains have witnessed the growth and decline of these great American cultures, as well as that of the mastodon, mammoth, and early bison that served as their prey. When America began to exercise its Manifest Destiny, Cimarron became a stop on the Mountain Branch of the Santa Fe Trail.

Home to Lucien B. Maxwell, owner of a controversial 1,714,765-acre land grant, the region became embroiled in the bloody Colfax County War when Maxwell sold his land in 1870. During the turbulent years that followed, Cimarron, which means "wild" or "unruly" in Spanish, lived up to its name as Western legends including Kit Carson, Clay Allison, Charles Kennedy, and Black Jack Ketchum left their mark. Today, the Village of Cimarron is visited for its historical importance as well as its spectacular mountain scenery.



The Old Mill Museum

## SCENIC DRIVES



Tooth of Time, Santa Fe Trail landmark

As part of the **National Scenic Byways**, the Cimarron area offers spectacular vistas along the **Mountain Branch of the Santa Fe Trail**. Wagon ruts are still visible where the Trail crosses highways US 64 to the north, NM 58 to

the east, and NM 21 to the south

of Cimarron. To retrace part of the actual route, one can travel south 13 miles along NM 21 from Cimarron to Sweetwater Gap and experience the very scenery that pioneers witnessed almost two centuries ago during their hazardous 10-week journey to Santa Fe. Cimarron is also the gateway to the famous **Enchanted Circle** and **Valle Vidal Loop** tours, each offering unique views of the breathtaking Sangre de Cristo Mountains.

## RELAXATION AND BEAUTY

Inspiration and home for many artists, Cimarron has a timeless yet rugged beauty that captivates the adventurer spirit. The Village lies between the eastern side of the 13,000-foot Sangre de Cristo Mountains and the Great Plains – truly *Where the Rockies Meet the Plains*. Glorious



sunrises, spectacular sunsets, cobalt blue skies, and countless stars in the nighttime heavens are but a part of Cimarron's enchanting and enduring natural beauty.

Fishing the Cimarron River

## OUTDOOR ACTIVITIES

Throughout the year outdoor activities abound in the Cimarron area. Recreational opportunities include world class fishing and hunting, miles of horseback riding and hiking, wildlife viewing, wilderness camping, excellent downhill and cross country skiing, picnicking, biking, or just relaxing beneath the ever-changing Western sky. Fly fishermen pursue native Cutthroat, Rainbow, and Brown Trout in the Valle Vidal and the Cimarron River. The **Valle Vidal Unit** (Valley of Life) of the **Carson National Forest** includes 100,000 acres of prime elk habitat, with a herd of some 1,700 managed for Boone & Crockett hunting. The spectacular mountain scenery of the Valle Vidal is open to bikers, hikers, campers, and horseback riders most of the year.

Elk in the Valle Vidal



In addition to excellent fishing along the scenic **Cimarron River**, nine miles of which are a premier Wild Brown Trout fishery, **Cimarron Canyon State Park** hosts other recreational activities. The nearby **Maxwell Wildlife Refuge** is composed of 2,800 acres of grassland, lakes, and agricultural land that feature excellent migratory waterfowl viewing and other wildlife observation and photographic opportunities. The **E. S. (Elliot) Barker Wildlife Area** offers similar attractions in a truly primitive setting. Contact the Cimarron Chamber of Commerce or visit their website for more information on these unique wilderness areas.

## UNIQUE SHOPS

Stroll through art studios and galleries, watch a skilled hand-weaver in action, order a custom saddle or tour a candle factory. Cimarron boasts a variety of wares including historical clothing, pottery and ceramics, leatherwork, jewelry, weaving, paintings, photographs, woodwork, folk art and candles. Our schools also offer a community greenhouse displaying a variety of native plants and flowers.



St. James Hotel, National Historic Landmark

## MUSEUMS AND HISTORICAL INTEREST

Historic Cimarron features many sites on the **Walking Tour of Old Town**. In 1864, local land baron Lucien Maxwell built the Aztec Grist Mill to grind corn and wheat for Fort Union soldiers and the local Ute and Jicarilla Apache Indians. As the **Old Mill Museum**, this landmark houses a collection of photographs and artifacts interpreting local history. Also legendary, the **Philmont Scout Ranch** was donated to the Boy Scouts of America in 1938 by oilman Waite Phillips. Along with its national training facilities and High Adventure Base, Philmont hosts the **Villa Philmonte**, completed in 1927 as Phillips' summer home. Also on the ranch are the **Philmont Museum/ Seton Library** and the **Kit Carson Museum at Rayado**, the latter certified Santa Fe Trail site serving as a living history camp during the summer.

Villa Philmonte

